



## Instructions for CRAB Feeder Setup

*You will need an Allen Wrench to secure the CRAB feeder system*

### Material Included

4 Bolts (Already screwed onto rails)



2 Support Brackets



4 Feeder Plates (With 2 cups each)



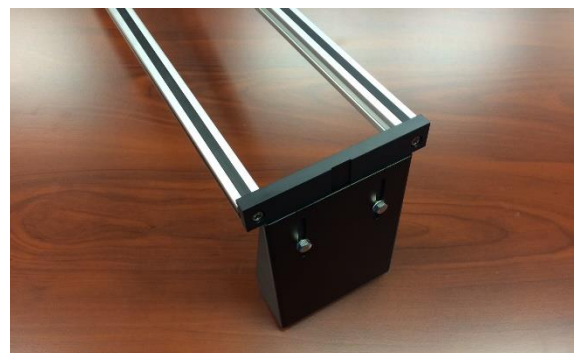
2 Aluminum Rails

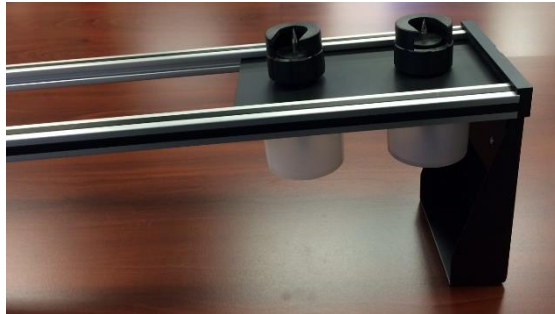


4 Dual Lock Strips



- 
1. Unscrew bolts from one side of rails all the way out. Mount rails onto one (1) support bracket by making sure the open gaps of the rails are facing each other. Screw on support bracket to the end of each rail. (Do not overtighten the rails)





2. With one support bracket on, start sliding feeder plates onto rails ONE BY ONE. The spikes of the feeder plates should be facing upwards and outlets of the bottom cups should all be on the same side.



All outlets on the same side



3. Once all feeder plates are on the rails, unscrew bolts from the open side of the rails and mount one (1) support bracket. Secure support bracket with bolts. (Do not overtighten bolts)



4. Recommended to use dual lock strips for placements of the feeder. Attach one strip on each bottom side of feeder. Proceed to attach the other two lock strips on desired surface and complete by placing both together.



If preferred, there are holes on the bottom of feeder to use screws instead of dual lock strips.



### Fully Assembled CRAB Feeder System



For uninterrupted feeding of two liters per color: insert two liters of the same color next to each other and connect the reservoirs with tubing